

Laserfiche® EMPOWER®

Transforming Government Operations

Harnessing the Full Power of Laserfiche with Integrations



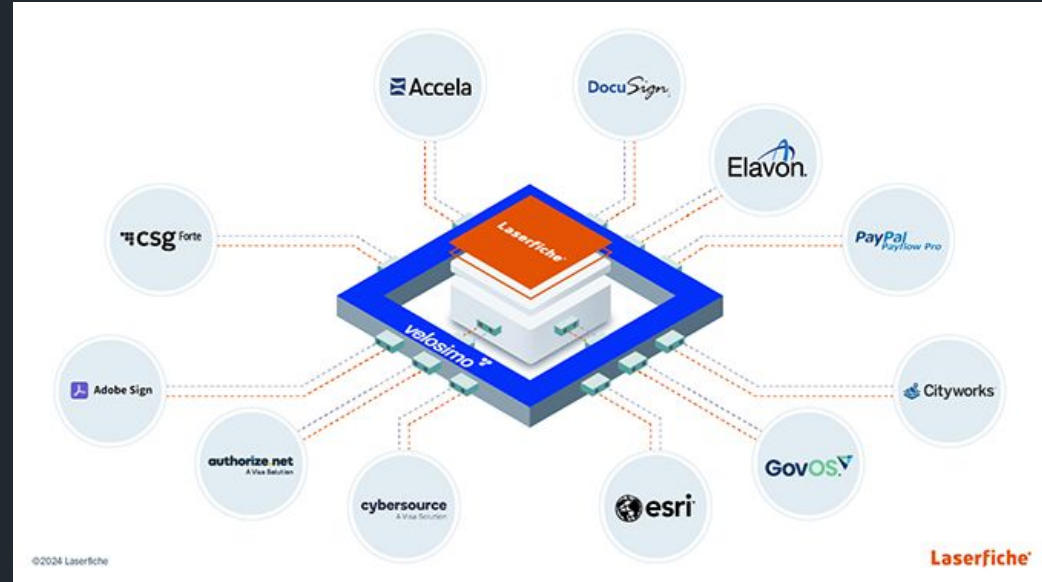
Andrew D' Ottavio
VP, Product
Velosimo



Brian Johnson
IT Solutions Manager –
Distributed Applications
City of Fort Worth Texas

Agenda

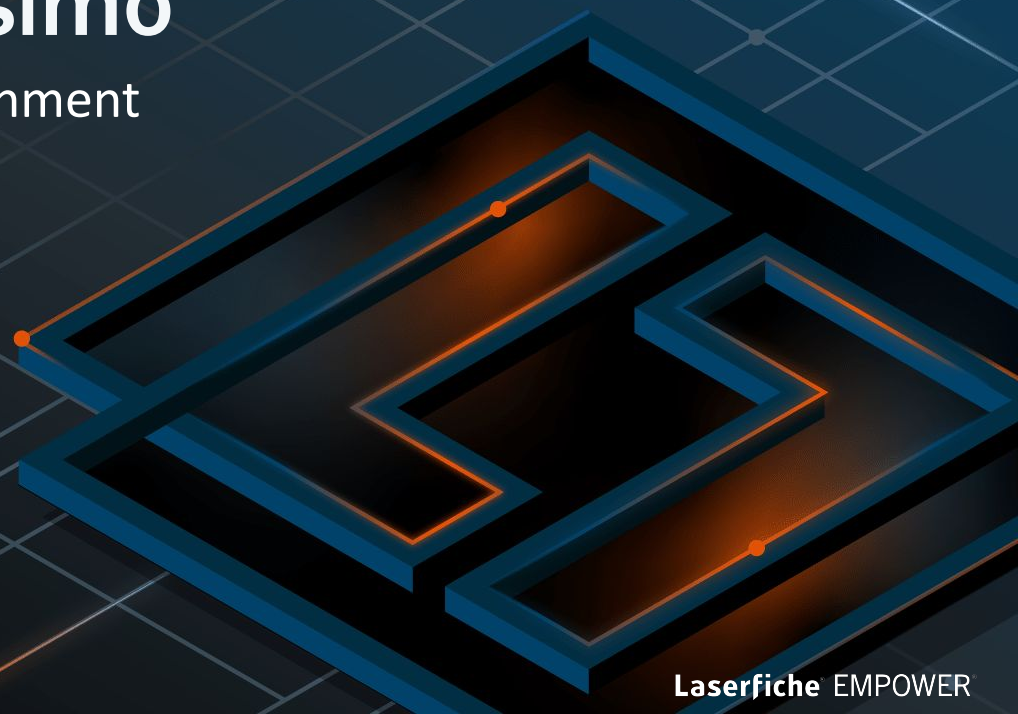
1. Introductions
2. Velosimo Overview
3. City of Fort Worth, TX Overview
4. Live demonstration
5. Q & A





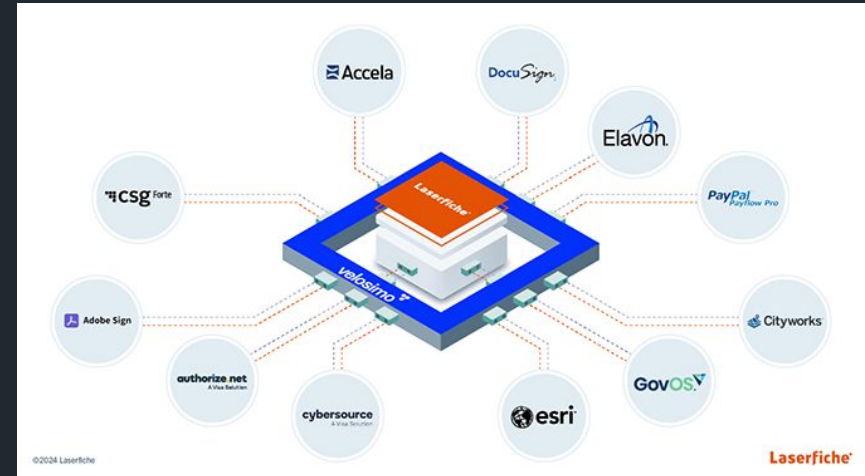
Overview of Velosimo

Integration Platform for Government



Velosimo for Laserfiche

- Velosimo connects Laserfiche to the systems government agencies rely on every day—no code, no hassle. Our platform powers effortless, automated data flow across the tools your clients already use.
- Velosimo offers purpose-built, no-code connectors that extend Laserfiche with seamless, bi-directional integrations to the most commonly used government applications.



Glance at Customers Using Velosimo

- Avondale, AZ
- Albany, OR
- Asheville, NC
- Carroll County, MD
- Chandler, AZ
- Chino, CA
- Chula Vista, CA
- Culver City, CA
- Dallas, TX
- Downey, CA
- Dublin, OH
- DuPage County, IL
- Durham, NC
- El Paso, TX
- Fairfax, VA
- Fontana, CA
- Fremont, CA
- Fresno, CA
- Fort Worth, TX
- High Point, NC
- Hollister, CA
- Inglewood, CA
- Jurupa Valley, CA
- Kern County, CA
- Lancaster, CA
- LOGIS - MN
- Macomb County, MI
- Manatee County, FL
- Maryland Heights, MO
- Menlo Park, CA
- Merced County, CA
- Mesa, AZ
- Milwaukee, WI
- Monterey Bay Air Resources
- Monterey Park, CA
- Oakland, CA
- Olmsted County, MN
- Omaha, NE
- Ontario, CA
- Palo Alto, CA
- Paradise Valley, AZ
- Paso Robles, CA
- Polk County, FL
- Portland, OR
- Queen Creek, AZ
- Rancho Cucamonga, CA
- Rochester, MN
- San Antonio, TX
- San Bernardino County, CA
- San Diego, CA
- San Dimas, CA
- San Joaquin County, CA
- Santa Barbara County, CA
- Seminole County, FL
- South Metro Fire Rescue, CO
- St. Cloud, MN
- State of California HCAI
- State of Oregon Bldg Codes
- Stockton, CA
- Town of New Glasgow, NS
- Tulare Joint Union HS District
- UC Davis
- UC San Francisco
- Walnut Creek, CA
- Washington County, MD
- Washington DC
- Weld County, CO
- West Covina, CA
- Whittier, CA
- Yakima County, WA

Velosimo | Integrations made easy

- Velosimo delivers no-code integrations for the systems government teams rely on most—fast, reliable, and built for the public sector.
- An integration platform like Velosimo replaces custom builds with secure, no-code connectors—delivering faster deployments, lower costs, and more reliable digital services.

User Interface

- Business Technologists (No-code)
- IT Managers, Developers (Low-Code)
- CIO, CTO, IT Managers (Dashboards & Reporting)

No-Code Connectors

- Cityworks, Accela, Laserfiche, OpenText

Applications

- Shopping Cart
- Short Term Rental
- xx component

Pre-Built Endpoints

- Accela, Esri, Bluebeam Revu, Cityworks, OpenText, Cartegraph, IBM FileNet, Tyler, Cybersource, ServiceNow, Adobe Sign, SharePoint, DocuSign, Laserfiche, OpenCounter, GovOS, Box, Google Drive

Velosimo | Key Partners & Endpoints



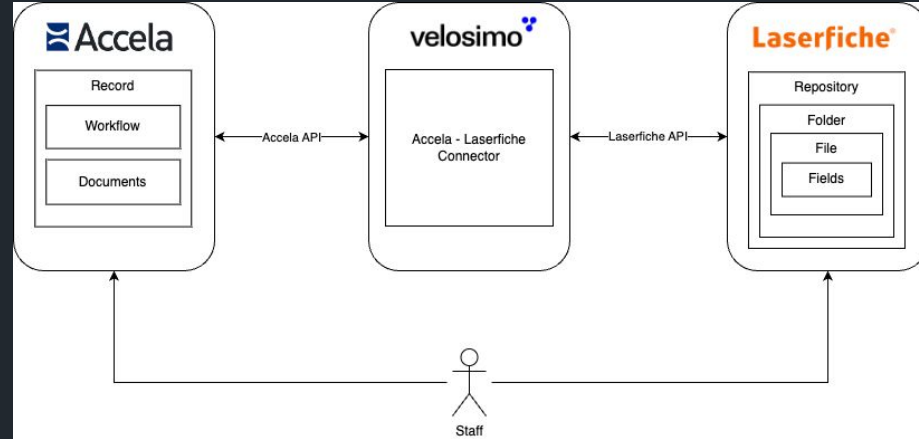
ArcGIS



Velosimo | Accela – Laserfiche Connector

Seamless, No-Code Integration for Smarter Government Workflows

- Pre-built, bi-directional integration between Accela and Laserfiche
- Automatically syncs documents, attachments, and metadata
- Fully no-code configuration—no custom development required
- Saves time, reduces errors, and eliminates manual document handling
- Fast to deploy, easy to maintain, and built for government agencies





Overview of City of Fort Worth, TX

Background & History

City Size

12th largest city in the U.S with a population growth from 400,000 to 900,000 over 50 years.

City Employees

Approximately 8,100 employees

Laserfiche Team

A team of 5 primarily manages Laserfiche projects and initiatives



The background features a dark blue grid with orange lines and dots. On the right side, there is a large, stylized graphic of a maze or a series of nested, overlapping rectangular paths in shades of blue and orange, suggesting a complex system or process flow.

System Overview

1

Inception Timeline

The City of Forth Worth adopted Laserfiche in 2011

3

Licensing

Approximately 250 licenses with 80% actively in use. Due to rapid expansion, plans are underway to increase number of licenses.

2

Environment

The system operates in a self-hosted environment, maintaining control over data, workflows, and other components.

4

Weblink Integration

An active weblink license enables public access to city documents and information.



System Architecture

1

Production Repositories

8 repositories with approximately 13 departments

2

Server Setup

6 servers (CJIS, Non-CJIS, Weblink) for both test and production environments.

3

Test Environment Importance

Discussion on the importance and usage of the test environment

Laserfiche Products



Laserfiche 11

Laserfiche 11



Import Agent



Desktop & Web Client

Desktop & Web Client



Workflow



Laserfiche Directory Server

Laserfiche Directory Server



Weblink

Weblink

Development Services – Certificate of Occupancy

Permits are the means by which the City of Fort Worth regulates construction. There are several different types of permits, based on the type of construction: building, plumbing, mechanical, and electrical.

- Departments Served
 - Development Services
 - Water
 - Transportation Public Works
 - Parks & Recreation
 - Code Enforcement
 - Police & Fire
- Accela Users
 - 536
- Permits per Year
 - 20,000 +

Velosimo Integration

Task Details Closed

Assigned Date: 01/23/2025
Due Date: 01/23/2025
Assigned to: Assigned to Department Dev Customer Service
Current Status: C of O
Status Date: 02/12/2025
Action By: Jacob Guajardo
Overtime: No
Comments: Start Time
End Time: Hours Spent 0.0
Billable: No
Action by Department: Dev Customer Service
Time Tracking Start Date: Est. Completion Date
In Possession Time (hrs): Display E-mail Address in ACA
Estimated Hours: 0.0
 Display Comment in ACA
Comment Display in ACA:
 All ACA Users
 Record Creator
 Licensed Professional
 Contact

Name	Page Count	Creation Date	Last Modified	Template Name
2/12/2025_6209_WHITEBRUSH PL		2/12/2025 1:10 PM	3/3/2025 10:58 AM	ACCELA-Certificate of Occupancy

Accele
Workflow
Certificate of
Occupancy

Generates PDF

Velosimo
Integration
Script

Document &
Metadata
passed to
Laserefiche

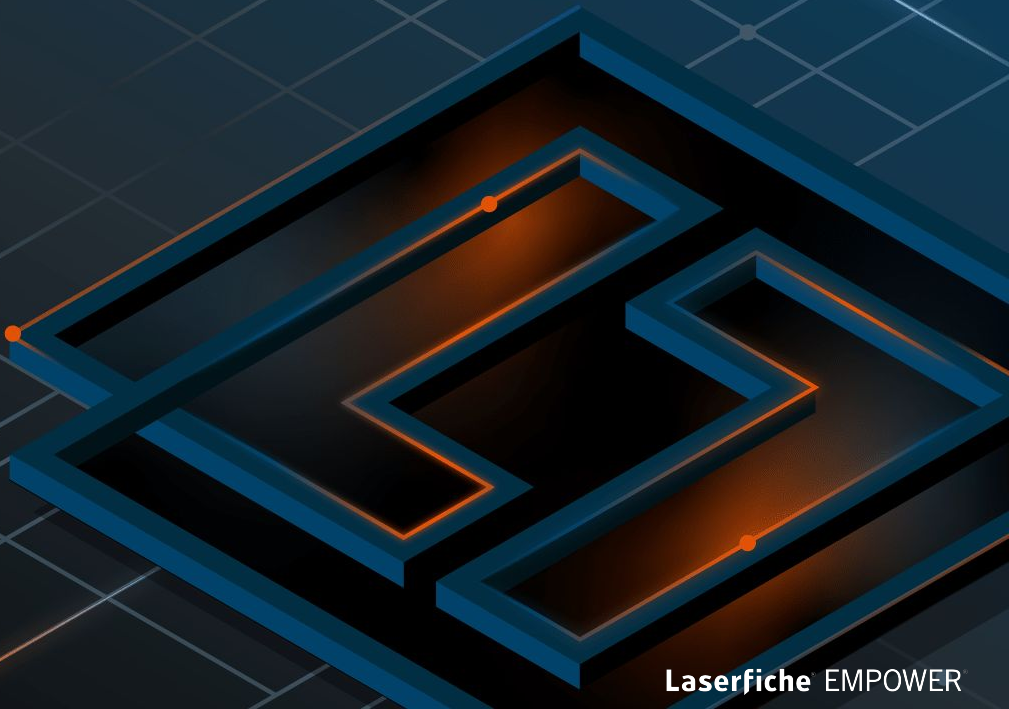
Workflow
Imports &
Renames/Files
Document

Integration Benefits

- Elimination of manual file transfers, reducing the risk of human error and missing records.
- Allows for reallocation of staff time to focus on higher-value tasks, boosting efficiency
- Improved document accessibility, making CO's available as needed for businesses and stakeholders.

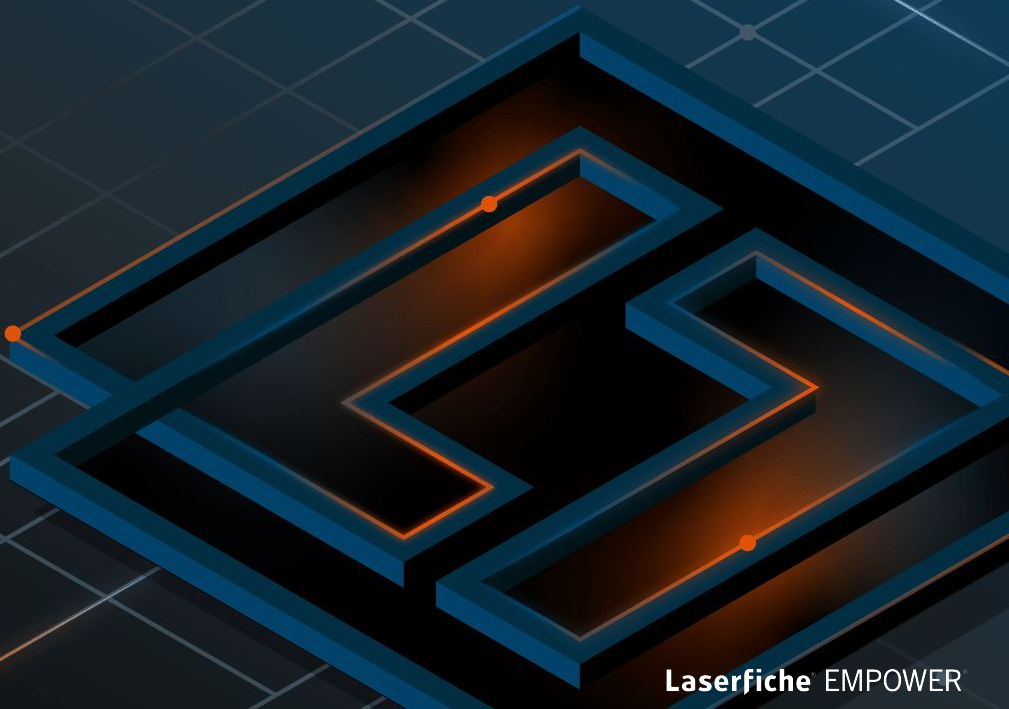


Live Demo





Questions?



Laserfiche® EMPOWER®



Thank you for attending!



Andrew D' Ottavio
VP, Product
Velosimo
Andrew@velosimo.com
<https://www.velosimo.com/>



Brian Johnson
IT Solutions Manager – Distributed Applications
City of Fort Worth Texas
Brian.K.Johnson@fortworthtexas.gov
<https://www.fortworthtexas.gov>